

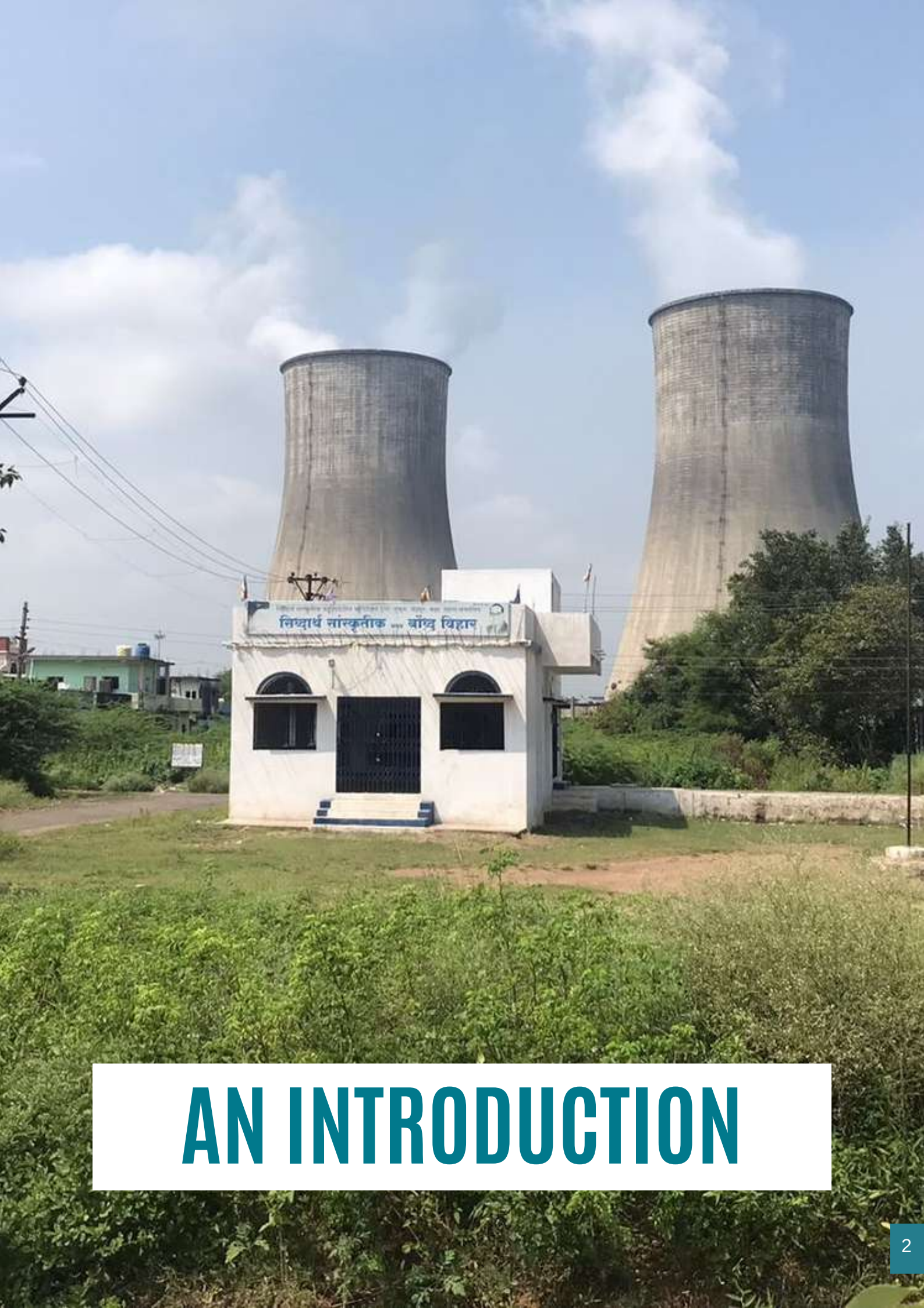


# CHANDRAPUR AIR QUALITY MONITORING REPORT

5TH DECEMBER 2021 - 5TH APRIL 2022

# TABLE OF CONTENTS

<b>01.</b> Background	3
<b>02.</b> Methodology	
i. Real-time, low-cost air quality sensors	6
ii. Deployment of air quality sensors	7
<b>03.</b> Findings of air quality analysis	9
<b>04.</b> Inferences	13
<b>05.</b> Conclusion	15
<b>06.</b> Next Steps	16
<b>07.</b> Annexures	
i. Annexure 1 - National Ambient Air Quality Standards	18
ii. Annexure 2- 24-Hour averages of PM2.5	19



# AN INTRODUCTION

# BACKGROUND

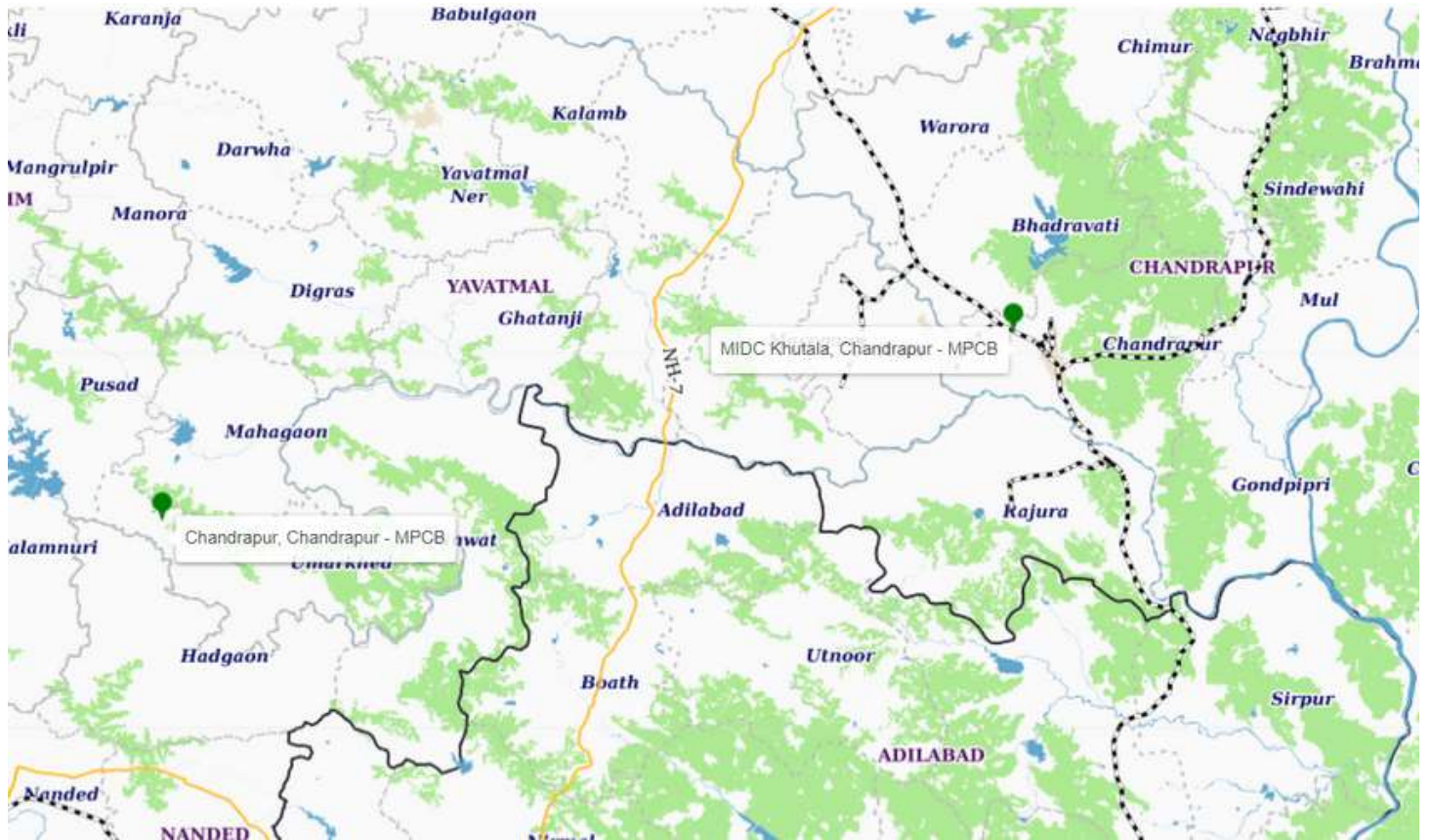
Chandrapur city, the '**City of Black Gold**' is located in the Vidarbha region of Maharashtra. It is rightly called so because of the abundant availability of coal in the region. A surplus of coal has led to the opening of an increasing number of coal mines and the Chandrapur Super Thermal Power Plant (CSTPS) in the city. Further, the abundant availability of minerals like iron ore and limestone in the neighbouring regions of Sindewahi, Rajura and Korpana has led to the emergence of cement plants and steel factories.

The abundance of the minerals and industries based on them has played a critical role in the development of Chandrapur. However, this has also led to the emergence of environmental problems. In addition to this, vehicular emissions and domestic coal burning also contribute significantly to the multitude of air pollution problems in Chandrapur. The deteriorating air quality is threatening the health of citizens, crop yields of farmers and the rich wildlife that is so closely situated to Chandrapur city. Unless an effective strategy is evolved to control the environmental pollution in a time-bound manner the situation is bound to worsen.

Chandrapur's air pollution crisis has been deliberated at several Parliamentary and Legislatively Assembly sessions. Ministry of Environment, Forests & Climate Change (MoEFCC) and Maharashtra Pollution Control (MPCB) have issued directions to various industries and implementing agencies respectively, directing them to take effective steps to control environmental degradation and pollution. Despite all the attention it has received over several years, only two real-time air quality monitoring stations have been installed in the city, which is home to more than 3.5 lakh people. Further, these are located at a distance from the main city area where most of the population thrives. Three real-time, low-cost particulate matter sensors were thus installed in December 2020 in residences across Chandrapur city to identify the pollution hotspots and provide an insight into the quality of air that citizens are breathing.

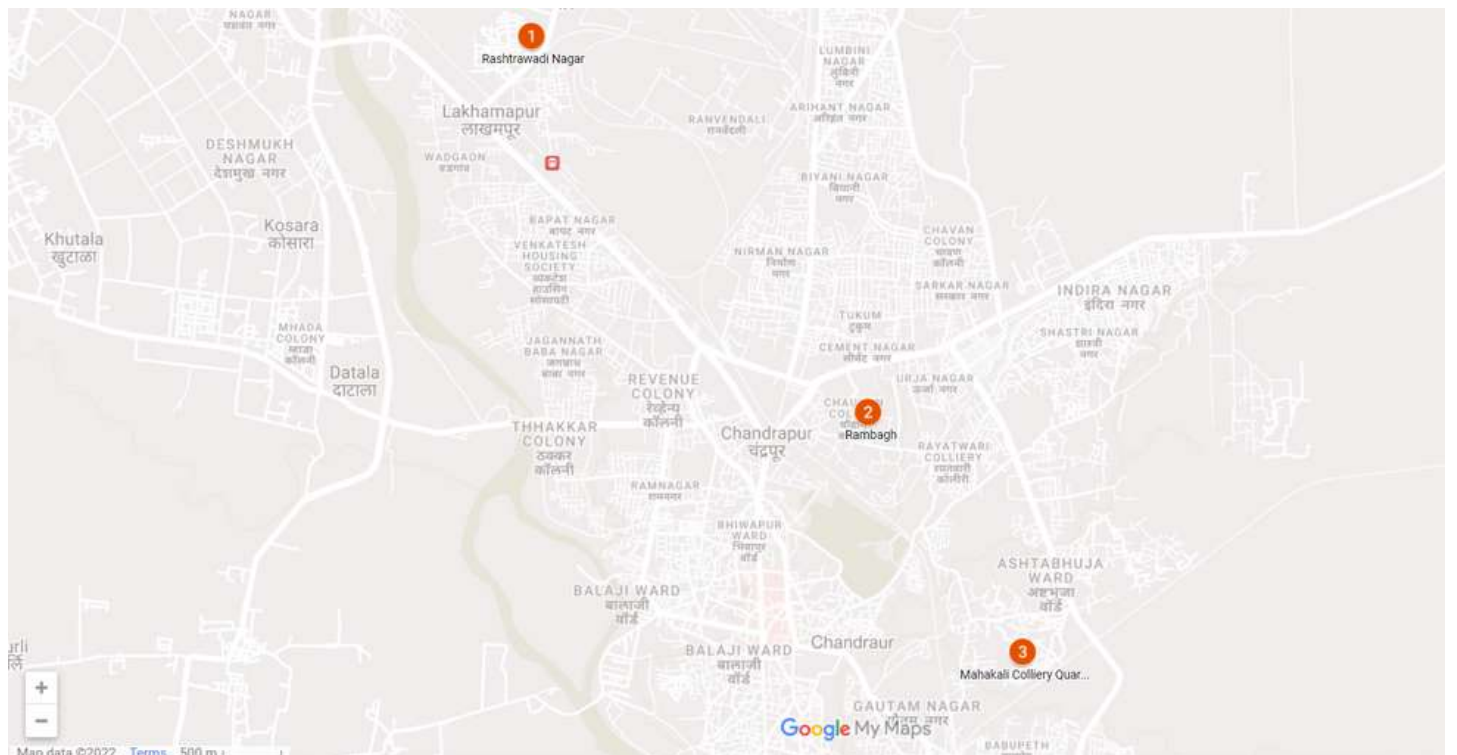


# LOCATION OF REAL-TIME AIR QUALITY MONITORING STATIONS SET UP BY MPCB



Source: [Central Pollution Control Board](#)

# LOCATION OF REAL-TIME, LOW-COST AIR QUALITY SENSORS SET UP WITH THE SUPPORT OF THE COMMUNITY



# METHODOLOGY

# REAL-TIME, LOW-COST AIR QUALITY SENSORS

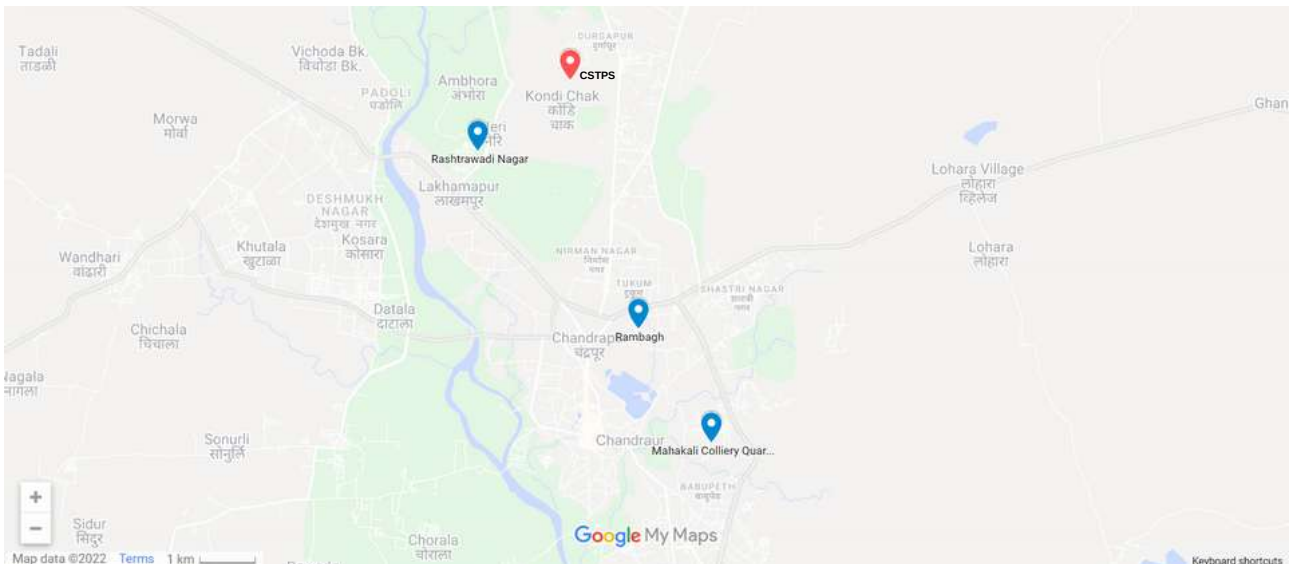
Atmos devices were used to study the air quality in Chandrapur. This monitor works on laser scattering technology and can measure real-time ambient particulate matter PM 1, PM 2.5, and PM 10 ( $\mu\text{g}/\text{m}^3$ ) along with temperature and relative humidity. The data from the monitor is stored both in internal memory (8GB) and on the Azure cloud platform from where it can be downloaded easily. The data can also be viewed on the map-based dashboard. In India, these monitors have been installed across 20 cities and various studies conducted have confirmed the accuracy of these monitors. When validated against high-grade FEM instruments, these monitors have shown a high correlation coefficient of  $\sim 0.8 R^2$  (Mean Absolute Percentage Error 15%)



# DEPLOYMENT OF AIR QUALITY SENSORS

The three real-time, low-cost particulate matter sensors were deployed at the following locations in Chandrapur city:

1. Rashtrawadi Nagar, a residential area located near the CSTPS (~2 kms)
2. Rambagh, a residential area close to NH 930
4. Mahakali Colliery Quarters, a residential area, once home to those who worked in the coal mines.



The guidelines given below were followed while deploying the air quality monitors:

1. **Sensor location** – Sensor has to be installed away from all known point-sources of air pollution and away from all obstructions, in an open area.
2. **Sensor Height** – Sensor height plays a crucial role in collecting relevant data. If it is installed at ground level (breathing zone), then it may give data on the impact on human health. However, actual air quality information is at a higher level. So, sensors need to be installed at least at a height of 7-10 feet for capturing ambient air quality data.
3. **Sensor Distribution** – For city-wide monitoring, it is important that the sensors are deployed strategically to cover various geographic locations like green parks, industrial areas, major traffic routes, residential areas, etc.



```
...window).on(
...function b(b){return this.each(function()
...);function b(b){return this.each(function()
...){this.element=a(b)};c.VERSION="3.3.7",c.TRANSI
...target");if(d||(d=b.attr("href"),d=d&&d.replace
...tab",{relatedTarget:b[0]}),g=a.Event("show.bs.
...);this.activate(b.closest("li"),c),this.activa
...",relatedTarget:e[0]}))}}},c.prototype.activate
...("active").end().find('[data-toggle="tab"]').at
...offsetWidth,b.addClass("in"):b.removeClass("f
..."]').attr("aria-expanded",!0),e&&e()}var g=d.
...length);g.length&&h?g.one("bsTransitionEnd",f
...),a.fn.tab.Constructor=c,a.fn.tab.noConflict=f
...lick.bs.tab.data-api",[data-toggle="tab"],e
...return this.each(function(){var d=a(this),e=d
...function(b,d){this.options=a.extend({},c.DEF
...ion,this)).on("click.bs.affix.data-api",a.pro
...ll,this.checkPosition());c.VERSION="3.3.7",c
...var e=
...turn
...&i+j>
...);var
...setTimeout(a.proxy(this.checkPosition,this)
...ns.offset,e=d.top,f=d.bottom
...element))
```

# FINDINGS OF AIR QUALITY ANALYSIS

# FINDING 1

As per the latest WHO guidelines the 24-hour permissible limits of PM2.5 is 15  $\mu\text{g}/\text{m}^3$  and as per National Ambient Air Quality Standards (NAAQS) it is 60  $\mu\text{g}/\text{m}^3$ . An average of data collected across the three locations in the city indicate that Chandrapur has been consistently crossing the permissible levels of particulate matter. Overall, it crossed the permissible limit of PM2.5 (as per Indian standards) on 105 of the 122 days that the air quality was monitored.

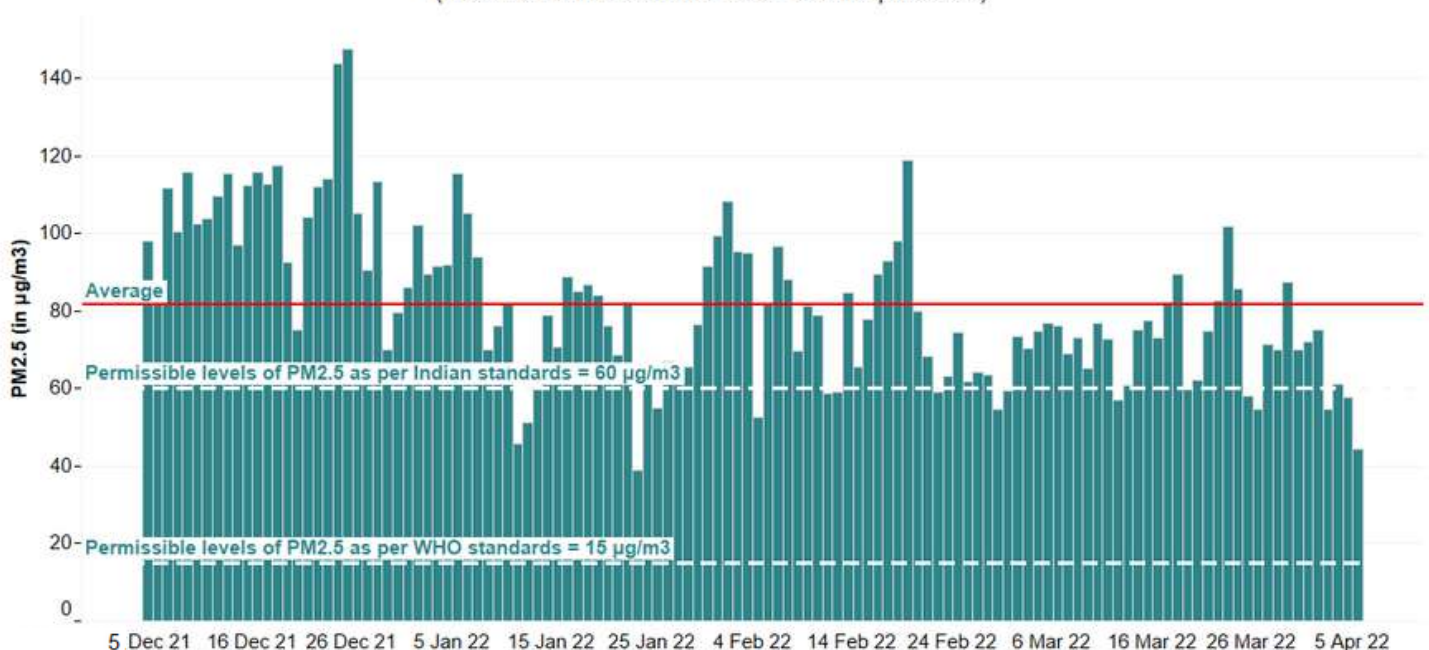
The average PM2.5 level recorded by the sensors\* across three locations at Chandrapur during this 122-day period was 81.7  $\mu\text{g}/\text{m}^3$ , which is 1.3 times the NAAQS and 5.4 times the WHO standard. During the same duration the average PM2.5 levels as recorded by the MPCB real-time air quality monitoring stations\*\* located at MIDC Khulata was 69.82  $\mu\text{g}/\text{m}^3$  and Chandrapur (located outside the city) was 52.53  $\mu\text{g}/\text{m}^3$ .

**NOTE:**

\*The sensors placed at Mahakali Colliery Quarters and Rahstrawadi Nagar did not record data for 1 and 7 days respectively;

\*\* The MPCB Monitoring station at Chandrapur did not record data points for 2 days

## Average Air Quality In Chandrapur Well Above National Ambient Air Quality Standards (Between 5th December 2021 & 5th April 2022)



# FINDING 2

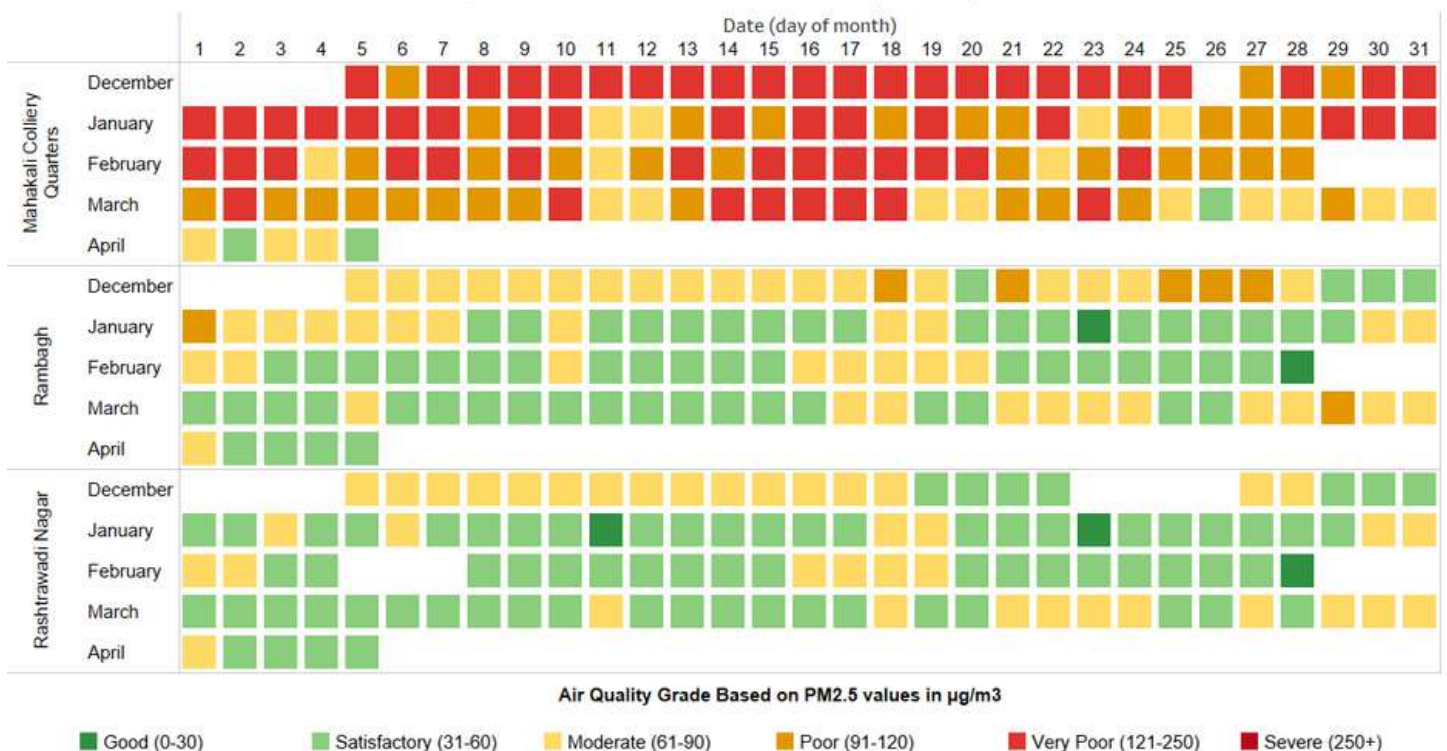
Of the three sensors, the one located at Mahakali Colliery Quarters\* recorded the highest levels of PM2.5, an average of 125.4 µg/m3 over this 122-day period. This is 2.1 times the NAAQS and 8.36 times the WHO standard. It recorded a total of **119 bad air days** (moderate, poor and very poor levels of PM2.5). It recorded 'satisfactory' levels of PM2.5 on 3 days.

With a significant number of 'good air' days, the sensor located at Rambagh recorded an average of 61.7 µg/m3 over this 122-day period. While this is close to the NAAQS of 60 µg/m3, it is 4.1 times the WHO standard. It recorded a total of **66 good air days** (good and satisfactory levels of PM2.5). It recorded 'moderate' levels of PM2.5 on 49 days and 'very poor' levels on 7 days.

Rashtrwadi Nagar\* recorded the lowest levels of PM2.5, an average of 55.1 µg/m3 over this 122-day period. While this is within the permissible limits as per NAAQS it is 3.7 times the WHO standard. It recorded a total of **77 good air days** (good and satisfactory levels of PM2.5). It recorded 'moderate' levels of PM2.5 on 39 days.

NOTE: \*The sensors placed at Mahakali Colliery Quarters and Rahstrawadi Nagar did not record data for 1 and 7 days respectively

**Mahakali Sees Highest Number Of 'Bad Air' Days**  
(Between 5th December 2021 & 5th April 2022)



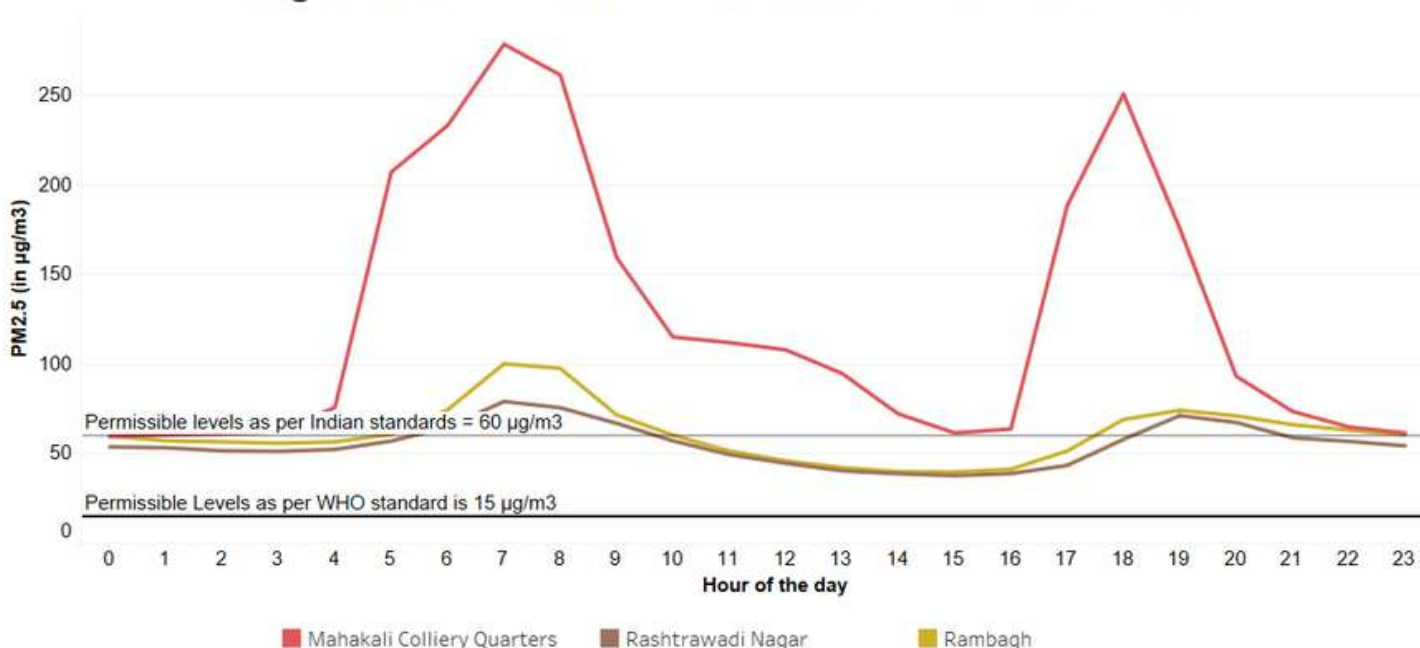
# FINDING 3

The data exhibits a classical diurnal pattern. The highest levels of PM2.5 were recorded in the early hours of the morning. These dropped drastically after 8:00 AM with the lowest levels observed between 10:00 AM and 4:00 PM. Again, the levels start to increase early in the evening and reduce only after 8:00 p.m.

Though data from all sensors exhibit a diurnal pattern, the sensor located at Mahakali Colliery Quarters exhibits huge curves with sharp peaks at 7:00 AM with PM2.5 levels of 278.7  $\mu\text{g}/\text{m}^3$  and at 6:00 PM with PM2.5 levels of 250.9  $\mu\text{g}/\text{m}^3$ .

Even as per NAAQS, citizens spend a significant period of their waking hours breathing in polluted air. According to WHO standards, citizens are breathing in polluted air 24x7. This data, therefore, is a clear indicator of the risks that constant exposure to such poor levels of air quality poses on the health and well-being of lakhs of people living in Chandrapur city. With exposure to such high levels of PM2.5 citizens are prone to allergies, skin infections, colds and coughs, recurrent lung infections, asthma, heart ailments and diabetes.

Highest Levels of PM2.5 Recorded at 7:00 AM and 6:00 PM





**WHAT THIS MEANS?**

# INFERENCES

## 01

### OVERALL AIR QUALITY EXCEEDS NORMS

- An average of 81.7  $\mu\text{g}/\text{m}^3$  over three locations indicates that Chandrapur has exceeded both NAAQS and WHO standards of air quality.
- Chandrapur witnessed a significant number of 'bad air days' throughout the 122-day period, where PM<sub>2.5</sub> levels had crossed permissible levels (60  $\mu\text{g}/\text{m}^3$  as per NAAQS) on 105 out of 122 days.

## 02

### A POLLUTION HOTSPOT WAS IDENTIFIED

- Further analysis of the data revealed that even though the overall air quality isn't meeting standards, there are parts of the city that contribute significantly to air pollution.
- The highest levels of PM<sub>2.5</sub>, with an average of 125.4  $\mu\text{g}/\text{m}^3$ , were recorded by the sensor deployed at the Mahakali Colliery Quarters. As a result, even though both Rambagh and Rashtrawadi Nagar recorded 'satisfactory' PM<sub>2.5</sub> levels on many days, the overall air quality was considerably compromised by high PM<sub>2.5</sub> levels at Mahakali Colliery Quarters.
- Moreover, the sharp spikes at early morning and evening confirm that domestic coal burning contributes significantly to air pollution in this area.

## 03

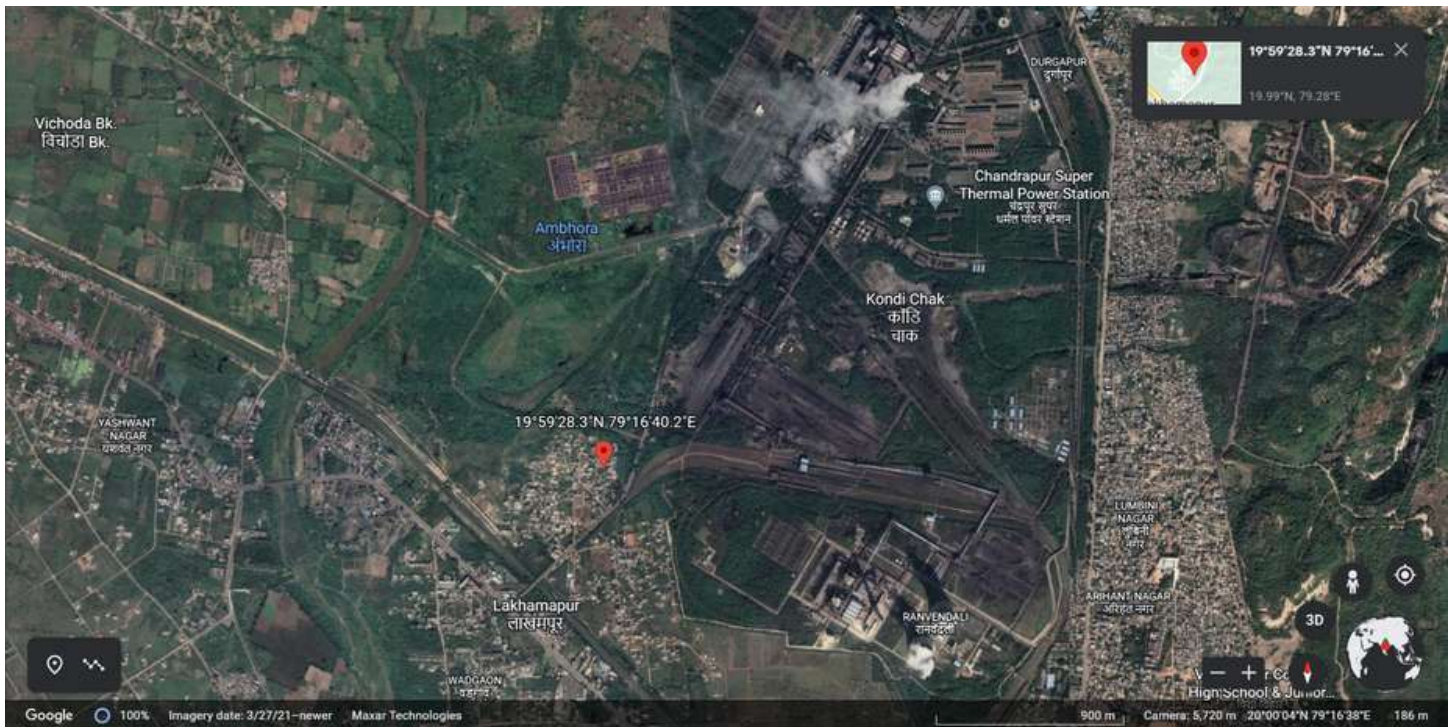
### AIR QUALITY WORST AT 7:00 AM AND 6:00 PM

- Lastly, very high levels of PM<sub>2.5</sub> were recorded between 4:00 AM and 8:00 AM. Going for a walk/jog in the morning will do more harm than good.
- Further, data also suggests that residents are breathing in polluted air for a significant period of their waking hours.

# 04

## EXTERNAL FACTORS LIKE WIND AFFECTS AIR QUALITY

- The sensor placed in Rashtrawadi Nagar is ~2 kms from CSTPS. Despite being in such close proximity to the CSTPS the sensor recorded 77 good air days (good and satisfactory levels of PM2.5) during this 122-day period.
- Air pollution at any given location is a function of local emissions, pollution coming from nearby and distant places and the meteorology governing it.
- The speed and direction of the wind affect air quality just like temperature, precipitation, and relative humidity.
- As seen in the satellite imagery below, the emissions from the chimney of the CSTPS are moving away from the location of the air quality sensor.



# CONCLUSION

A four-month-long assessment of air quality was carried out in Chandrapur city to identify the pollution hotspots and estimate the PM<sub>2.5</sub> levels here. Data strongly indicates that the entire region is encompassed by poor air quality that threatens the health of lakhs of citizens either working or residing in the region. Tackling this health hazard will require collective and collaborative efforts.

**We suggest the following actions that need to be taken up with priority to effectively address the issue of air pollution in the region:**

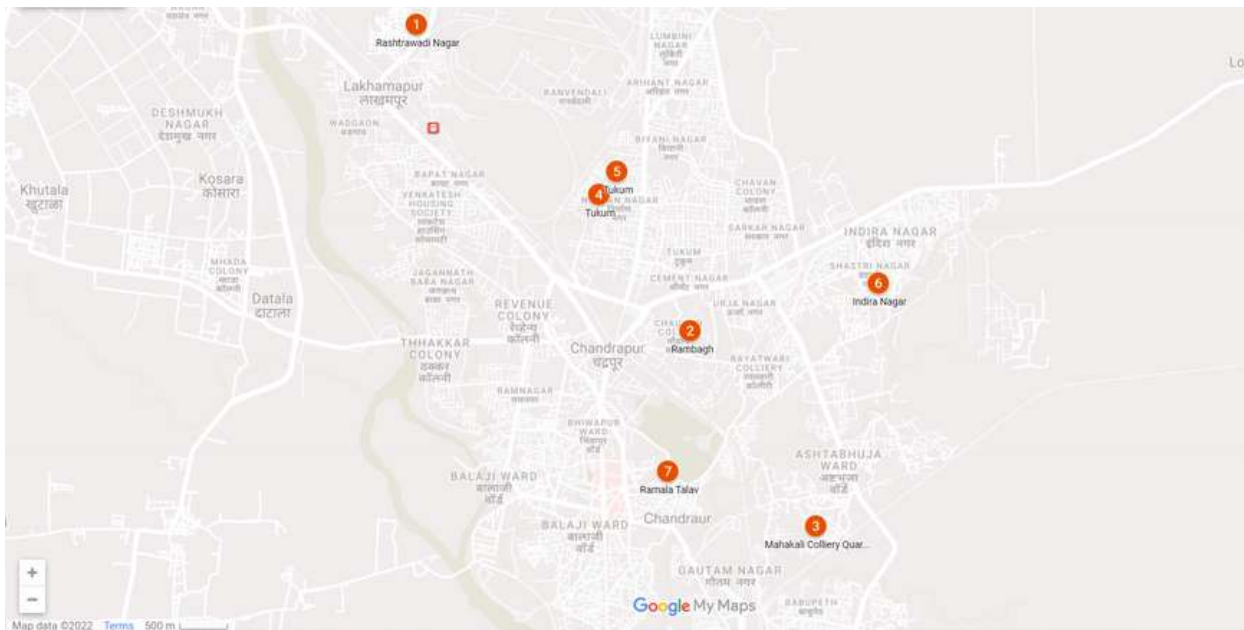
1. There is a need for a real-time, low-cost air quality monitoring network that complements the existing technologies (real-time, air quality monitoring stations, satellite data and manual monitoring). Such spatial and temporal understanding of air quality is crucial as it helps to identify hotspots in the region.
2. Domestic coal burning is the major source of emission at Mahakali Colliery Quarters, which was identified as a pollution hotspot. Residents here are from lower socio-economic backgrounds, so they have little or no understanding of how air pollution impacts the environment and health. In addition, ample availability of coal, not only makes it convenient but also a cheap fuel.
  - In order to address this problem, firstly there is a need to educate the community.
  - Secondly, local authorities and government must provide them with an alternative cleaner and cheaper fuel.
3. Ensure timely and effective implementation of Chandrapur City Clean Air Action Plan through the involvement and equal participation of the citizens, government and NGOs
  - Conduct regular review meetings to determine the progress of the plans
  - If the implementation is delayed, identify the reasons for the delay and suggest alternatives to remedy the situation
  - Take disciplinary action against polluters for not following the guidelines
4. It is essential to conduct a city-wide health impact assessment at the earliest. In addition, the local authorities need to issue public health advisories from time to time.
5. Raise awareness among the different stakeholders and seek action through active participation.



# NEXT STEPS

## STRENGTHEN THE LOW-COST AIR QUALITY NETWORK

- In addition to the 3 low-cost, real-time air quality sensors, four more have been added to this network, taking the total to 7 sensors in the city.



## RAISE AWARENESS WITHIN THE COMMUNITY

- Dissemination of the air quality data to the citizens through reports, awareness sessions and media publications.
- Conduct workshops with different stakeholders and facilitate the implementation of solutions that reduce emissions at sources.



# ANNEXURE

# ANNEXURE 1

## NATIONAL AMBIENT AIR QUALITY STANDARDS (2009)

Pollutants	Time Weighted Average	Concentration in Ambient Air		Methods of Measurement
		Industrial, Residential, Rural and other Areas	Ecologically Sensitive Area (Notified by Central Government)	
Sulphur Dioxide (SO <sub>2</sub> ), µg/m <sup>3</sup>	Annual *	50	20	-Improved West and Gaeke Method -Ultraviolet Fluorescence
	24 Hours **	80	80	
Nitrogen Dioxide (NO <sub>2</sub> ), µg/m <sup>3</sup>	Annual *	40	30	-Jacob & Hochheiser modified (NaOH-NaAsO <sub>2</sub> ) Method -Gas Phase Chemiluminescence
	24 Hours **	80	80	
Particulate Matter (Size less than 10µm) or PM <sub>10</sub> , µg/m <sup>3</sup>	Annual *	60	60	-Gravimetric -TEOM -Beta attenuation
	24 Hours **	100	100	
Particulate Matter (Size less than 2.5µm) or PM <sub>2.5</sub> , µg/m <sup>3</sup>	Annual *	40	40	-Gravimetric -TEOM -Beta attenuation
	24 Hours **	60	60	
Ozone (O <sub>3</sub> ) µg/m <sup>3</sup>	8 Hours *	100	100	-UV Photometric -Chemiluminescence -Chemical Method
	1 Hour **	180	180	
Lead (Pb) µg/m <sup>3</sup>	Annual *	0.50	0.50	-AAS/ICP Method after sampling on EPM 2000 or equivalent filter paper -ED-XRF using Teflon filter
	24 Hours **	1.0	1.0	
Carbon Monoxide(CO), mg/m <sup>3</sup>	8 Hours **	02	02	-Non dispersive Infrared (NDIR) Spectroscopy
	1 Hour **	04	04	
Ammonia (NH <sub>3</sub> ), µg/m <sup>3</sup>	Annual *	100	100	-Chemiluminescence -Indophenol method
	24 Hours **	400	400	
Benzene (C <sub>6</sub> H <sub>6</sub> ), µg/m <sup>3</sup>	Annual *	05	05	-Gas Chromatography (GC) based continuous analyzer -Adsorption and desorption followed by GC analysis
Benzo(a)Pyrene (BaP) Particulate phase only, ng/m <sup>3</sup>	Annual *	01	01	-Solvent extraction followed by HPLC/GC analysis
Arsenic (As), ng/m <sup>3</sup>	Annual *	06	06	-AAS/ICP Method after sampling on EPM 2000 or equivalent filter paper
Nickel (Ni), ng/m <sup>3</sup>	Annual *	20	20	-AAS/ICP Method after sampling on EPM 2000 or equivalent filter paper

\* Annual Arithmetic mean of minimum 104 measurements in a year at a particular site taken twice a week 24 hourly at uniform intervals.  
 \*\* 24 hourly or 8 hourly or 1 hourly monitored values, as applicable, shall be complied with 98% of the time in a year. 2% of the time, they may exceed the limits but not on two consecutive days of monitoring.

NOTE: Whenever and wherever monitoring results on two consecutive days of monitoring exceed the limits specified above for the respective category, it shall be considered adequate reason to institute regular or continuous monitoring and further investigations.

Source: Central Pollution Control Board

# ANNEXURE 2

24-Hour Averages For PM2.5 (in µg/m3) From December 05, 2021 to April 05, 2022

From Date	To Date	PM2.5 (in µg/m3)	Temperature (in degree Celsius)	Relative Humidity (in %)	Location
05-12-2021 00:00	05-12-2021 00:00	65.76	30.3	47.01	Rashtrawadi Nagar
06-12-2021 00:00	06-12-2021 00:00	63.38	30.93	49.14	Rashtrawadi Nagar
07-12-2021 00:00	07-12-2021 00:00	80.45	31.19	49.15	Rashtrawadi Nagar
08-12-2021 00:00	08-12-2021 00:00	85.42	31.18	46.37	Rashtrawadi Nagar
09-12-2021 00:00	09-12-2021 00:00	69.9	31.72	46.02	Rashtrawadi Nagar
10-12-2021 00:00	10-12-2021 00:00	69.43	31.36	47.96	Rashtrawadi Nagar
11-12-2021 00:00	11-12-2021 00:00	64.88	30.52	48.08	Rashtrawadi Nagar
12-12-2021 00:00	12-12-2021 00:00	78.03	29.7	45.21	Rashtrawadi Nagar
13-12-2021 00:00	13-12-2021 00:00	67.78	28.4	45.46	Rashtrawadi Nagar
14-12-2021 00:00	14-12-2021 00:00	69.36	28.4	45.69	Rashtrawadi Nagar
15-12-2021 00:00	15-12-2021 00:00	81.87	28.5	45.63	Rashtrawadi Nagar
16-12-2021 00:00	16-12-2021 00:00	75.5	27.79	45.24	Rashtrawadi Nagar
17-12-2021 00:00	17-12-2021 00:00	81.28	27.88	45.13	Rashtrawadi Nagar
18-12-2021 00:00	18-12-2021 00:00	74.11	28.2	46.53	Rashtrawadi Nagar
19-12-2021 00:00	19-12-2021 00:00	57.4	26.85	41.44	Rashtrawadi Nagar
20-12-2021 00:00	20-12-2021 00:00	48.06	22.42	47.24	Rashtrawadi Nagar
21-12-2021 00:00	21-12-2021 00:00	36.5	31.05	25.8	Rashtrawadi Nagar
22-12-2021 00:00	22-12-2021 00:00	48.43	33.01	28.3	Rashtrawadi Nagar
27-12-2021 00:00	27-12-2021 00:00	79.21	32.54	49.42	Rashtrawadi Nagar
28-12-2021 00:00	28-12-2021 00:00	69.95	31.42	49.47	Rashtrawadi Nagar
29-12-2021 00:00	29-12-2021 00:00	42.14	28.99	54.13	Rashtrawadi Nagar
30-12-2021 00:00	30-12-2021 00:00	52.47	27.61	52.43	Rashtrawadi Nagar
31-12-2021 00:00	31-12-2021 00:00	57.97	27.96	52.6	Rashtrawadi Nagar
01-01-2022 00:00	01-01-2022 00:00	59.9	29.18	49.89	Rashtrawadi Nagar
02-01-2022 00:00	02-01-2022 00:00	57.55	29.71	48.34	Rashtrawadi Nagar
03-01-2022 00:00	03-01-2022 00:00	63.5	29.62	47.91	Rashtrawadi Nagar
04-01-2022 00:00	04-01-2022 00:00	55.41	29.16	44.88	Rashtrawadi Nagar
05-01-2022 00:00	05-01-2022 00:00	58.63	29.1	44.42	Rashtrawadi Nagar
06-01-2022 00:00	06-01-2022 00:00	66.01	31.08	45.55	Rashtrawadi Nagar
07-01-2022 00:00	07-01-2022 00:00	55.36	31.15	44.62	Rashtrawadi Nagar
08-01-2022 00:00	08-01-2022 00:00	44.94	31.92	45.31	Rashtrawadi Nagar
09-01-2022 00:00	09-01-2022 00:00	48.85	31.8	48.73	Rashtrawadi Nagar
10-01-2022 00:00	10-01-2022 00:00	55.72	29.46	56.29	Rashtrawadi Nagar
11-01-2022 00:00	11-01-2022 00:00	30.03	28.93	56.02	Rashtrawadi Nagar
12-01-2022 00:00	12-01-2022 00:00	32.76	28.02	54.37	Rashtrawadi Nagar
13-01-2022 00:00	13-01-2022 00:00	37.91	28.38	52.87	Rashtrawadi Nagar
14-01-2022 00:00	14-01-2022 00:00	36.47	29.24	55.18	Rashtrawadi Nagar
15-01-2022 00:00	15-01-2022 00:00	46.05	27.38	55.51	Rashtrawadi Nagar
16-01-2022 00:00	16-01-2022 00:00	51.86	27.93	51.78	Rashtrawadi Nagar
17-01-2022 00:00	17-01-2022 00:00	58.11	29.08	46.8	Rashtrawadi Nagar
18-01-2022 00:00	18-01-2022 00:00	65.78	29.09	48.02	Rashtrawadi Nagar
19-01-2022 00:00	19-01-2022 00:00	62.51	28.09	45.26	Rashtrawadi Nagar
20-01-2022 00:00	20-01-2022 00:00	55.2	28.23	43.84	Rashtrawadi Nagar

21-01-2022 00:00	21-01-2022 00:00	49.93	28.72	44.72	Rashtrawadi Nagar
22-01-2022 00:00	22-01-2022 00:00	47.37	29.85	44.45	Rashtrawadi Nagar
23-01-2022 00:00	23-01-2022 00:00	27.73	29.9	42.64	Rashtrawadi Nagar
24-01-2022 00:00	24-01-2022 00:00	43.71	27.93	42.31	Rashtrawadi Nagar
25-01-2022 00:00	25-01-2022 00:00	40.69	27.37	42.44	Rashtrawadi Nagar
26-01-2022 00:00	26-01-2022 00:00	44.39	26.56	42.79	Rashtrawadi Nagar
27-01-2022 00:00	27-01-2022 00:00	38.09	25.73	40.57	Rashtrawadi Nagar
28-01-2022 00:00	28-01-2022 00:00	43.67	25.2	40.09	Rashtrawadi Nagar
29-01-2022 00:00	29-01-2022 00:00	42.59	25.67	39.65	Rashtrawadi Nagar
30-01-2022 00:00	30-01-2022 00:00	66.35	26.52	40.87	Rashtrawadi Nagar
31-01-2022 00:00	31-01-2022 00:00	76.87	27.71	40.78	Rashtrawadi Nagar
01-02-2022 00:00	01-02-2022 00:00	75.07	28.34	42.35	Rashtrawadi Nagar
02-02-2022 00:00	02-02-2022 00:00	63.17	29.34	42.39	Rashtrawadi Nagar
03-02-2022 00:00	03-02-2022 00:00	52.32	31.98	45.01	Rashtrawadi Nagar
04-02-2022 00:00	04-02-2022 00:00	38.34	29.82	39.16	Rashtrawadi Nagar
08-02-2022 00:00	08-02-2022 00:00	43	30.63	41.33	Rashtrawadi Nagar
09-02-2022 00:00	09-02-2022 00:00	53.37	29.38	49.57	Rashtrawadi Nagar
10-02-2022 00:00	10-02-2022 00:00	56.15	30.54	46.67	Rashtrawadi Nagar
11-02-2022 00:00	11-02-2022 00:00	44.72	28.34	39.9	Rashtrawadi Nagar
12-02-2022 00:00	12-02-2022 00:00	37.9	27.71	38.4	Rashtrawadi Nagar
13-02-2022 00:00	13-02-2022 00:00	42.56	28.06	38.4	Rashtrawadi Nagar
14-02-2022 00:00	14-02-2022 00:00	43.28	28.87	39.1	Rashtrawadi Nagar
15-02-2022 00:00	15-02-2022 00:00	51.36	30.68	40.3	Rashtrawadi Nagar
16-02-2022 00:00	16-02-2022 00:00	60.73	32.19	44.4	Rashtrawadi Nagar
17-02-2022 00:00	17-02-2022 00:00	62.04	31.52	46.99	Rashtrawadi Nagar
18-02-2022 00:00	18-02-2022 00:00	68.34	32.63	43.7	Rashtrawadi Nagar
19-02-2022 00:00	19-02-2022 00:00	64.89	33.46	43.14	Rashtrawadi Nagar
20-02-2022 00:00	20-02-2022 00:00	54.02	33.31	41.41	Rashtrawadi Nagar
21-02-2022 00:00	21-02-2022 00:00	45.96	31.24	36.58	Rashtrawadi Nagar
22-02-2022 00:00	22-02-2022 00:00	42.64	31.07	38.57	Rashtrawadi Nagar
23-02-2022 00:00	23-02-2022 00:00	44.09	33.2	40.59	Rashtrawadi Nagar
24-02-2022 00:00	24-02-2022 00:00	42.87	35.33	39.75	Rashtrawadi Nagar
25-02-2022 00:00	25-02-2022 00:00	40.47	34.82	40.32	Rashtrawadi Nagar
26-02-2022 00:00	26-02-2022 00:00	46.67	34.82	41.11	Rashtrawadi Nagar
27-02-2022 00:00	27-02-2022 00:00	33.56	34.52	39.26	Rashtrawadi Nagar
28-02-2022 00:00	28-02-2022 00:00	27.26	33.7	38.02	Rashtrawadi Nagar
01-03-2022 00:00	01-03-2022 00:00	36.62	33.93	36.69	Rashtrawadi Nagar
02-03-2022 00:00	02-03-2022 00:00	44.93	33.89	37.18	Rashtrawadi Nagar
03-03-2022 00:00	03-03-2022 00:00	48.06	34.58	37.71	Rashtrawadi Nagar
04-03-2022 00:00	04-03-2022 00:00	57.23	36.38	36.09	Rashtrawadi Nagar
05-03-2022 00:00	05-03-2022 00:00	55.62	35.84	37.09	Rashtrawadi Nagar
06-03-2022 00:00	06-03-2022 00:00	56.9	36.09	36.21	Rashtrawadi Nagar
07-03-2022 00:00	07-03-2022 00:00	50.36	35.38	36.76	Rashtrawadi Nagar
08-03-2022 00:00	08-03-2022 00:00	53.55	35.6	36.07	Rashtrawadi Nagar
09-03-2022 00:00	09-03-2022 00:00	54.57	35.32	33.74	Rashtrawadi Nagar
10-03-2022 00:00	10-03-2022 00:00	57.55	35.54	35.03	Rashtrawadi Nagar

11-03-2022 00:00	11-03-2022 00:00	78.09	36.11	35.79	Rashtrawadi Nagar
12-03-2022 00:00	12-03-2022 00:00	45.67	36.94	32.76	Rashtrawadi Nagar
13-03-2022 00:00	13-03-2022 00:00	43.24	35.79	32.43	Rashtrawadi Nagar
14-03-2022 00:00	14-03-2022 00:00	42.89	35.22	30.79	Rashtrawadi Nagar
15-03-2022 00:00	15-03-2022 00:00	43.31	37.01	32.38	Rashtrawadi Nagar
16-03-2022 00:00	16-03-2022 00:00	41.95	37.71	32.54	Rashtrawadi Nagar
17-03-2022 00:00	17-03-2022 00:00	46.74	37.8	32.14	Rashtrawadi Nagar
18-03-2022 00:00	18-03-2022 00:00	62.38	38.77	32.35	Rashtrawadi Nagar
19-03-2022 00:00	19-03-2022 00:00	58.39	39.04	36.37	Rashtrawadi Nagar
20-03-2022 00:00	20-03-2022 00:00	51.45	39.09	36.52	Rashtrawadi Nagar
21-03-2022 00:00	21-03-2022 00:00	63.51	39.24	34.47	Rashtrawadi Nagar
22-03-2022 00:00	22-03-2022 00:00	66.82	39.26	31.44	Rashtrawadi Nagar
23-03-2022 00:00	23-03-2022 00:00	72.99	38.49	30.7	Rashtrawadi Nagar
24-03-2022 00:00	24-03-2022 00:00	82.07	39.45	36.58	Rashtrawadi Nagar
25-03-2022 00:00	25-03-2022 00:00	55.5	41.02	38.02	Rashtrawadi Nagar
26-03-2022 00:00	26-03-2022 00:00	52.37	41.34	37.77	Rashtrawadi Nagar
27-03-2022 00:00	27-03-2022 00:00	63.57	39.84	35.63	Rashtrawadi Nagar
28-03-2022 00:00	28-03-2022 00:00	58.67	39.85	30.23	Rashtrawadi Nagar
29-03-2022 00:00	29-03-2022 00:00	68.61	39.83	27.98	Rashtrawadi Nagar
30-03-2022 00:00	30-03-2022 00:00	70.57	39.22	28.55	Rashtrawadi Nagar
31-03-2022 00:00	31-03-2022 00:00	72.3	39.53	28.09	Rashtrawadi Nagar
01-04-2022 00:00	01-04-2022 00:00	75.96	40.26	30.55	Rashtrawadi Nagar
02-04-2022 00:00	02-04-2022 00:00	50.9	41.07	37.88	Rashtrawadi Nagar
03-04-2022 00:00	03-04-2022 00:00	58.15	41.37	37.45	Rashtrawadi Nagar
04-04-2022 00:00	04-04-2022 00:00	54.14	41.99	35.94	Rashtrawadi Nagar
05-04-2022 00:00	05-04-2022 00:00	41.88	42.03	35.54	Rashtrawadi Nagar
05-12-2021 00:00	05-12-2021 00:00	79.18	33.41	35.82	Rambagh
06-12-2021 00:00	06-12-2021 00:00	83.74	33.64	38.61	Rambagh
07-12-2021 00:00	07-12-2021 00:00	85.35	33.82	38.61	Rambagh
08-12-2021 00:00	08-12-2021 00:00	83.15	34.11	35.2	Rambagh
09-12-2021 00:00	09-12-2021 00:00	77.46	34.28	35.45	Rambagh
10-12-2021 00:00	10-12-2021 00:00	76.14	33.61	38.01	Rambagh
11-12-2021 00:00	11-12-2021 00:00	76.21	33.21	37.64	Rambagh
12-12-2021 00:00	12-12-2021 00:00	88.68	32.6	34	Rambagh
13-12-2021 00:00	13-12-2021 00:00	86.89	31.66	33.78	Rambagh
14-12-2021 00:00	14-12-2021 00:00	79.07	30.93	34.81	Rambagh
15-12-2021 00:00	15-12-2021 00:00	84.07	30.66	35.26	Rambagh
16-12-2021 00:00	16-12-2021 00:00	90.65	30.42	34.49	Rambagh
17-12-2021 00:00	17-12-2021 00:00	89.12	30.63	34.46	Rambagh
18-12-2021 00:00	18-12-2021 00:00	92.91	30.8	36.49	Rambagh
19-12-2021 00:00	19-12-2021 00:00	62.49	30.07	30.03	Rambagh
20-12-2021 00:00	20-12-2021 00:00	55.49	28.43	25.63	Rambagh
21-12-2021 00:00	21-12-2021 00:00	100.54	28.01	28.81	Rambagh
22-12-2021 00:00	22-12-2021 00:00	90.94	28.97	30.07	Rambagh
23-12-2021 00:00	23-12-2021 00:00	69.21	30.3	30.17	Rambagh
24-12-2021 00:00	24-12-2021 00:00	75.65	31.43	31.96	Rambagh

25-12-2021 00:00	25-12-2021 00:00	99.86	32.14	34.66	Rambagh
26-12-2021 00:00	26-12-2021 00:00	105.21	31.9	39.48	Rambagh
27-12-2021 00:00	27-12-2021 00:00	98.35	32.61	42.28	Rambagh
28-12-2021 00:00	28-12-2021 00:00	85.26	32.7	40.52	Rambagh
29-12-2021 00:00	29-12-2021 00:00	47.93	30.67	45.49	Rambagh
30-12-2021 00:00	30-12-2021 00:00	61	29.45	43.84	Rambagh
31-12-2021 00:00	31-12-2021 00:00	57.72	28.16	46.26	Rambagh
01-01-2022 00:00	01-01-2022 00:00	109	26.93	47.88	Rambagh
02-01-2022 00:00	02-01-2022 00:00	66.87	31.08	39.72	Rambagh
03-01-2022 00:00	03-01-2022 00:00	76.06	31.75	37.96	Rambagh
04-01-2022 00:00	04-01-2022 00:00	63.88	31.81	34.07	Rambagh
05-01-2022 00:00	05-01-2022 00:00	67.68	31.3	34.24	Rambagh
06-01-2022 00:00	06-01-2022 00:00	73.81	32.61	36.38	Rambagh
07-01-2022 00:00	07-01-2022 00:00	62.49	32.52	35.4	Rambagh
08-01-2022 00:00	08-01-2022 00:00	50.23	32.33	37.71	Rambagh
09-01-2022 00:00	09-01-2022 00:00	51.69	32.79	40.02	Rambagh
10-01-2022 00:00	10-01-2022 00:00	61.75	30.86	48.25	Rambagh
11-01-2022 00:00	11-01-2022 00:00	31.93	29.69	49.98	Rambagh
12-01-2022 00:00	12-01-2022 00:00	35.25	29.31	47.38	Rambagh
13-01-2022 00:00	13-01-2022 00:00	42.76	30.13	44.57	Rambagh
14-01-2022 00:00	14-01-2022 00:00	40.62	30.07	48.61	Rambagh
15-01-2022 00:00	15-01-2022 00:00	56.78	28.42	48.95	Rambagh
16-01-2022 00:00	16-01-2022 00:00	58.86	29.78	43.83	Rambagh
17-01-2022 00:00	17-01-2022 00:00	59.02	30.72	37.63	Rambagh
18-01-2022 00:00	18-01-2022 00:00	75.87	31.05	38.16	Rambagh
19-01-2022 00:00	19-01-2022 00:00	64.68	30.9	34.27	Rambagh
20-01-2022 00:00	20-01-2022 00:00	57.7	30.64	32.92	Rambagh
21-01-2022 00:00	21-01-2022 00:00	52.76	31.64	33.76	Rambagh
22-01-2022 00:00	22-01-2022 00:00	57.8	32.03	33.5	Rambagh
23-01-2022 00:00	23-01-2022 00:00	25.51	32.68	31.18	Rambagh
24-01-2022 00:00	24-01-2022 00:00	48.49	30.44	30.6	Rambagh
25-01-2022 00:00	25-01-2022 00:00	43.42	29.84	30.99	Rambagh
26-01-2022 00:00	26-01-2022 00:00	46.3	29.23	31.64	Rambagh
27-01-2022 00:00	27-01-2022 00:00	40.36	29.11	28.61	Rambagh
28-01-2022 00:00	28-01-2022 00:00	44.35	28.47	27.49	Rambagh
29-01-2022 00:00	29-01-2022 00:00	49.46	28.94	26.9	Rambagh
30-01-2022 00:00	30-01-2022 00:00	80.25	29.64	29.06	Rambagh
31-01-2022 00:00	31-01-2022 00:00	74.19	30.77	28.59	Rambagh
01-02-2022 00:00	01-02-2022 00:00	81.77	31.52	29.54	Rambagh
02-02-2022 00:00	02-02-2022 00:00	65.77	32.41	30.29	Rambagh
03-02-2022 00:00	03-02-2022 00:00	55.68	33.69	34.38	Rambagh
04-02-2022 00:00	04-02-2022 00:00	43.03	33.13	26.72	Rambagh
05-02-2022 00:00	05-02-2022 00:00	46.7	30.91	24.95	Rambagh
06-02-2022 00:00	06-02-2022 00:00	41.51	30.82	24.5	Rambagh
07-02-2022 00:00	07-02-2022 00:00	50.23	31.85	28.32	Rambagh
08-02-2022 00:00	08-02-2022 00:00	52.28	33.32	30.78	Rambagh

09-02-2022 00:00	09-02-2022 00:00	56.16	33.96	35.78	Rambagh
10-02-2022 00:00	10-02-2022 00:00	64.59	34.16	34.94	Rambagh
11-02-2022 00:00	11-02-2022 00:00	47.64	31.97	27.1	Rambagh
12-02-2022 00:00	12-02-2022 00:00	38.78	31.09	24.69	Rambagh
13-02-2022 00:00	13-02-2022 00:00	52.74	31.38	24.46	Rambagh
14-02-2022 00:00	14-02-2022 00:00	42.21	32.55	24.64	Rambagh
15-02-2022 00:00	15-02-2022 00:00	50.07	33.53	28.2	Rambagh
16-02-2022 00:00	16-02-2022 00:00	65.23	34.15	34.06	Rambagh
17-02-2022 00:00	17-02-2022 00:00	71.33	33.7	36.5	Rambagh
18-02-2022 00:00	18-02-2022 00:00	74.67	33.95	33.46	Rambagh
19-02-2022 00:00	19-02-2022 00:00	69.84	34.85	33.01	Rambagh
20-02-2022 00:00	20-02-2022 00:00	63.6	35.42	29.53	Rambagh
21-02-2022 00:00	21-02-2022 00:00	49.9	34.5	23.54	Rambagh
22-02-2022 00:00	22-02-2022 00:00	46.01	34.79	23	Rambagh
23-02-2022 00:00	23-02-2022 00:00	44.07	35.65	28.29	Rambagh
24-02-2022 00:00	24-02-2022 00:00	48.55	36.67	29.29	Rambagh
25-02-2022 00:00	25-02-2022 00:00	52.77	36.74	29.13	Rambagh
26-02-2022 00:00	26-02-2022 00:00	44.39	36.55	29.46	Rambagh
27-02-2022 00:00	27-02-2022 00:00	36.86	36.04	28.55	Rambagh
28-02-2022 00:00	28-02-2022 00:00	28.38	36.09	25.33	Rambagh
01-03-2022 00:00	01-03-2022 00:00	37.53	36.38	23.62	Rambagh
02-03-2022 00:00	02-03-2022 00:00	41.73	37.05	23.29	Rambagh
03-03-2022 00:00	03-03-2022 00:00	50.33	37.47	23.97	Rambagh
04-03-2022 00:00	04-03-2022 00:00	53.31	37.8	25.11	Rambagh
05-03-2022 00:00	05-03-2022 00:00	61.33	37.67	25.47	Rambagh
06-03-2022 00:00	06-03-2022 00:00	54.6	37.68	24.85	Rambagh
07-03-2022 00:00	07-03-2022 00:00	46.27	37.59	24.65	Rambagh
08-03-2022 00:00	08-03-2022 00:00	52.54	37.64	23.31	Rambagh
09-03-2022 00:00	09-03-2022 00:00	46.88	37.76	19.92	Rambagh
10-03-2022 00:00	10-03-2022 00:00	48.9	38.13	20.63	Rambagh
11-03-2022 00:00	11-03-2022 00:00	57.67	38.47	22.11	Rambagh
12-03-2022 00:00	12-03-2022 00:00	45.72	39.11	20.41	Rambagh
13-03-2022 00:00	13-03-2022 00:00	38.82	38.16	18.89	Rambagh
14-03-2022 00:00	14-03-2022 00:00	40.95	38.07	17.23	Rambagh
15-03-2022 00:00	15-03-2022 00:00	45.04	38.86	19.03	Rambagh
16-03-2022 00:00	16-03-2022 00:00	46.51	39.92	18.92	Rambagh
17-03-2022 00:00	17-03-2022 00:00	78.11	40.07	19.17	Rambagh
18-03-2022 00:00	18-03-2022 00:00	80.61	40.44	20.95	Rambagh
19-03-2022 00:00	19-03-2022 00:00	52.94	40.11	26.27	Rambagh
20-03-2022 00:00	20-03-2022 00:00	49.38	39.94	26.25	Rambagh
21-03-2022 00:00	21-03-2022 00:00	65.68	40.25	23.94	Rambagh
22-03-2022 00:00	22-03-2022 00:00	76.47	40.78	18.6	Rambagh
23-03-2022 00:00	23-03-2022 00:00	88.72	40.28	17.67	Rambagh
24-03-2022 00:00	24-03-2022 00:00	82.45	40.16	25.83	Rambagh
25-03-2022 00:00	25-03-2022 00:00	57.23	41.19	28.64	Rambagh
26-03-2022 00:00	26-03-2022 00:00	54.23	40.83	29.38	Rambagh



27-03-2022 00:00	27-03-2022 00:00	62.97	40.72	25.46	Rambagh
28-03-2022 00:00	28-03-2022 00:00	64.86	40.97	18.44	Rambagh
29-03-2022 00:00	29-03-2022 00:00	94.27	40.63	16.42	Rambagh
30-03-2022 00:00	30-03-2022 00:00	68.27	40.87	15.58	Rambagh
31-03-2022 00:00	31-03-2022 00:00	62.09	41.12	14.58	Rambagh
01-04-2022 00:00	01-04-2022 00:00	69.03	41.29	19.14	Rambagh
02-04-2022 00:00	02-04-2022 00:00	52.97	41.3	28.94	Rambagh
03-04-2022 00:00	03-04-2022 00:00	56.46	41.82	27.35	Rambagh
04-04-2022 00:00	04-04-2022 00:00	57.39	42.12	26.7	Rambagh
05-04-2022 00:00	05-04-2022 00:00	43.76	41.95	26.73	Rambagh
05-12-2021 00:00	05-12-2021 00:00	149.68	31.39	38.97	Mahakali Colliery Quarters
06-12-2021 00:00	06-12-2021 00:00	112.03	31.6	41.35	Mahakali Colliery Quarters
07-12-2021 00:00	07-12-2021 00:00	169.12	32.12	41.44	Mahakali Colliery Quarters
08-12-2021 00:00	08-12-2021 00:00	133.36	32.16	38.33	Mahakali Colliery Quarters
09-12-2021 00:00	09-12-2021 00:00	199.5	32.18	39.32	Mahakali Colliery Quarters
10-12-2021 00:00	10-12-2021 00:00	162.24	32.02	40.49	Mahakali Colliery Quarters
11-12-2021 00:00	11-12-2021 00:00	170.21	31.09	40.13	Mahakali Colliery Quarters
12-12-2021 00:00	12-12-2021 00:00	161.45	30.07	37.32	Mahakali Colliery Quarters
13-12-2021 00:00	13-12-2021 00:00	191.26	29.03	36.98	Mahakali Colliery Quarters
14-12-2021 00:00	14-12-2021 00:00	142.68	29.02	37.33	Mahakali Colliery Quarters
15-12-2021 00:00	15-12-2021 00:00	171.26	28.93	37.27	Mahakali Colliery Quarters
16-12-2021 00:00	16-12-2021 00:00	181.29	28.15	37.14	Mahakali Colliery Quarters
17-12-2021 00:00	17-12-2021 00:00	168.2	28.39	36.66	Mahakali Colliery Quarters
18-12-2021 00:00	18-12-2021 00:00	185.76	28.1	39.22	Mahakali Colliery Quarters
19-12-2021 00:00	19-12-2021 00:00	157.98	27.24	34.48	Mahakali Colliery Quarters
20-12-2021 00:00	20-12-2021 00:00	122.05	24.89	31.48	Mahakali Colliery Quarters
21-12-2021 00:00	21-12-2021 00:00	175.75	24.63	32.02	Mahakali Colliery Quarters
22-12-2021 00:00	22-12-2021 00:00	196.62	26.13	33.2	Mahakali Colliery Quarters
23-12-2021 00:00	23-12-2021 00:00	159.57	27.32	34.31	Mahakali Colliery Quarters
24-12-2021 00:00	24-12-2021 00:00	212.09	29.31	35.24	Mahakali Colliery Quarters
25-12-2021 00:00	25-12-2021 00:00	195.9	31.27	36.65	Mahakali Colliery Quarters
27-12-2021 00:00	27-12-2021 00:00	93.68	30.02	47.77	Mahakali Colliery Quarters
28-12-2021 00:00	28-12-2021 00:00	184.85	31.24	43.64	Mahakali Colliery Quarters
29-12-2021 00:00	29-12-2021 00:00	119.49	28.79	49.68	Mahakali Colliery Quarters
30-12-2021 00:00	30-12-2021 00:00	125.46	27.53	47.5	Mahakali Colliery Quarters
31-12-2021 00:00	31-12-2021 00:00	140.48	28.32	46.54	Mahakali Colliery Quarters
01-01-2022 00:00	01-01-2022 00:00	137.39	29.36	43.07	Mahakali Colliery Quarters
02-01-2022 00:00	02-01-2022 00:00	144	30.01	40.83	Mahakali Colliery Quarters
03-01-2022 00:00	03-01-2022 00:00	135.26	29.75	40.74	Mahakali Colliery Quarters
04-01-2022 00:00	04-01-2022 00:00	155.98	28.98	36.88	Mahakali Colliery Quarters
05-01-2022 00:00	05-01-2022 00:00	220.01	28.91	36.9	Mahakali Colliery Quarters
06-01-2022 00:00	06-01-2022 00:00	175.64	30.89	38.75	Mahakali Colliery Quarters
07-01-2022 00:00	07-01-2022 00:00	163.64	30.94	37.89	Mahakali Colliery Quarters
08-01-2022 00:00	08-01-2022 00:00	115.06	31.48	39.13	Mahakali Colliery Quarters
09-01-2022 00:00	09-01-2022 00:00	127.48	32.19	41.33	Mahakali Colliery Quarters

10-01-2022 00:00	10-01-2022 00:00	128.79	29.36	51.68	Mahakali Colliery Quarters
11-01-2022 00:00	11-01-2022 00:00	74.86	28.72	51.99	Mahakali Colliery Quarters
12-01-2022 00:00	12-01-2022 00:00	85.51	28.3	49.03	Mahakali Colliery Quarters
13-01-2022 00:00	13-01-2022 00:00	99.64	28.73	47.29	Mahakali Colliery Quarters
14-01-2022 00:00	14-01-2022 00:00	159.99	29.46	49.86	Mahakali Colliery Quarters
15-01-2022 00:00	15-01-2022 00:00	108.83	27.56	49.89	Mahakali Colliery Quarters
16-01-2022 00:00	16-01-2022 00:00	155.23	28.75	45.05	Mahakali Colliery Quarters
17-01-2022 00:00	17-01-2022 00:00	138.08	29.62	39.59	Mahakali Colliery Quarters
18-01-2022 00:00	18-01-2022 00:00	118.54	29.24	40.2	Mahakali Colliery Quarters
19-01-2022 00:00	19-01-2022 00:00	125.1	28.44	37.04	Mahakali Colliery Quarters
20-01-2022 00:00	20-01-2022 00:00	115.36	28.53	35.47	Mahakali Colliery Quarters
21-01-2022 00:00	21-01-2022 00:00	102.98	29.25	36.01	Mahakali Colliery Quarters
22-01-2022 00:00	22-01-2022 00:00	141.41	30.49	35.02	Mahakali Colliery Quarters
23-01-2022 00:00	23-01-2022 00:00	63.27	31.19	32.48	Mahakali Colliery Quarters
24-01-2022 00:00	24-01-2022 00:00	93.65	28.35	33.25	Mahakali Colliery Quarters
25-01-2022 00:00	25-01-2022 00:00	80.4	27.31	34.89	Mahakali Colliery Quarters
26-01-2022 00:00	26-01-2022 00:00	110.17	27.06	34.44	Mahakali Colliery Quarters
27-01-2022 00:00	27-01-2022 00:00	110.77	26.29	32.24	Mahakali Colliery Quarters
28-01-2022 00:00	28-01-2022 00:00	108.65	25.97	30.89	Mahakali Colliery Quarters
29-01-2022 00:00	29-01-2022 00:00	137.75	26.66	30.58	Mahakali Colliery Quarters
30-01-2022 00:00	30-01-2022 00:00	128.26	27.3	30.9	Mahakali Colliery Quarters
31-01-2022 00:00	31-01-2022 00:00	146.89	28.45	30.76	Mahakali Colliery Quarters
01-02-2022 00:00	01-02-2022 00:00	167.44	29.31	31.45	Mahakali Colliery Quarters
02-02-2022 00:00	02-02-2022 00:00	156.5	30.31	32.76	Mahakali Colliery Quarters
03-02-2022 00:00	03-02-2022 00:00	176.61	33.04	35.67	Mahakali Colliery Quarters
04-02-2022 00:00	04-02-2022 00:00	76.11	30.42	30.13	Mahakali Colliery Quarters
05-02-2022 00:00	05-02-2022 00:00	107.8	29.79	26.08	Mahakali Colliery Quarters
06-02-2022 00:00	06-02-2022 00:00	152.22	28.65	28.05	Mahakali Colliery Quarters
07-02-2022 00:00	07-02-2022 00:00	125.9	30.17	30.53	Mahakali Colliery Quarters
08-02-2022 00:00	08-02-2022 00:00	113.6	31.92	33.18	Mahakali Colliery Quarters
09-02-2022 00:00	09-02-2022 00:00	132.72	33.2	37.18	Mahakali Colliery Quarters
10-02-2022 00:00	10-02-2022 00:00	114.99	32.35	37.69	Mahakali Colliery Quarters
11-02-2022 00:00	11-02-2022 00:00	83.72	29.38	29.88	Mahakali Colliery Quarters
12-02-2022 00:00	12-02-2022 00:00	100.83	28.97	27.15	Mahakali Colliery Quarters
13-02-2022 00:00	13-02-2022 00:00	158.22	29.46	26.72	Mahakali Colliery Quarters
14-02-2022 00:00	14-02-2022 00:00	111.19	31.04	26.67	Mahakali Colliery Quarters
15-02-2022 00:00	15-02-2022 00:00	133.07	32.55	29.82	Mahakali Colliery Quarters
16-02-2022 00:00	16-02-2022 00:00	140.82	33.18	35.86	Mahakali Colliery Quarters
17-02-2022 00:00	17-02-2022 00:00	144.98	31.9	39.4	Mahakali Colliery Quarters
18-02-2022 00:00	18-02-2022 00:00	151.57	33.18	35.24	Mahakali Colliery Quarters
19-02-2022 00:00	19-02-2022 00:00	222.33	34.06	34.35	Mahakali Colliery Quarters
20-02-2022 00:00	20-02-2022 00:00	121.76	34.14	31.65	Mahakali Colliery Quarters
21-02-2022 00:00	21-02-2022 00:00	107.09	32.72	26.39	Mahakali Colliery Quarters
22-02-2022 00:00	22-02-2022 00:00	89.25	32.98	25.82	Mahakali Colliery Quarters
23-02-2022 00:00	23-02-2022 00:00	101.09	34.27	30.48	Mahakali Colliery Quarters
24-02-2022 00:00	24-02-2022 00:00	131.63	36.31	29.96	Mahakali Colliery Quarters

25-02-2022 00:00	25-02-2022 00:00	92.24	36.09	29.99	Mahakali Colliery Quarters
26-02-2022 00:00	26-02-2022 00:00	101	35.79	30.93	Mahakali Colliery Quarters
27-02-2022 00:00	27-02-2022 00:00	120.28	35.29	29.5	Mahakali Colliery Quarters
28-02-2022 00:00	28-02-2022 00:00	108.88	35.43	26.68	Mahakali Colliery Quarters
01-03-2022 00:00	01-03-2022 00:00	104.77	35.6	25.08	Mahakali Colliery Quarters
02-03-2022 00:00	02-03-2022 00:00	135.45	36.47	24.7	Mahakali Colliery Quarters
03-03-2022 00:00	03-03-2022 00:00	114.86	37.07	24.62	Mahakali Colliery Quarters
04-03-2022 00:00	04-03-2022 00:00	114.2	37.35	25.92	Mahakali Colliery Quarters
05-03-2022 00:00	05-03-2022 00:00	114.63	37.47	25.95	Mahakali Colliery Quarters
06-03-2022 00:00	06-03-2022 00:00	117.62	37.23	25.58	Mahakali Colliery Quarters
07-03-2022 00:00	07-03-2022 00:00	110.25	36.73	25.55	Mahakali Colliery Quarters
08-03-2022 00:00	08-03-2022 00:00	113.2	37.05	24.1	Mahakali Colliery Quarters
09-03-2022 00:00	09-03-2022 00:00	95.33	37.25	21.38	Mahakali Colliery Quarters
10-03-2022 00:00	10-03-2022 00:00	125.66	37.66	22.58	Mahakali Colliery Quarters
11-03-2022 00:00	11-03-2022 00:00	83.46	38.38	22.44	Mahakali Colliery Quarters
12-03-2022 00:00	12-03-2022 00:00	80.06	38.44	20.68	Mahakali Colliery Quarters
13-03-2022 00:00	13-03-2022 00:00	100.69	37.66	19.85	Mahakali Colliery Quarters
14-03-2022 00:00	14-03-2022 00:00	142.11	37.32	18.65	Mahakali Colliery Quarters
15-03-2022 00:00	15-03-2022 00:00	143.62	38.7	20.44	Mahakali Colliery Quarters
16-03-2022 00:00	16-03-2022 00:00	130.95	39.79	20.36	Mahakali Colliery Quarters
17-03-2022 00:00	17-03-2022 00:00	121.74	40.21	19.1	Mahakali Colliery Quarters
18-03-2022 00:00	18-03-2022 00:00	124.79	40.31	21.05	Mahakali Colliery Quarters
19-03-2022 00:00	19-03-2022 00:00	69.06	40.44	25.64	Mahakali Colliery Quarters
20-03-2022 00:00	20-03-2022 00:00	85.77	40.04	26.14	Mahakali Colliery Quarters
21-03-2022 00:00	21-03-2022 00:00	95.35	40.58	23.46	Mahakali Colliery Quarters
22-03-2022 00:00	22-03-2022 00:00	104.44	40.87	18.92	Mahakali Colliery Quarters
23-03-2022 00:00	23-03-2022 00:00	142.5	39.94	17.84	Mahakali Colliery Quarters
24-03-2022 00:00	24-03-2022 00:00	92.24	40.51	25.05	Mahakali Colliery Quarters
25-03-2022 00:00	25-03-2022 00:00	61.35	42.46	26.53	Mahakali Colliery Quarters
26-03-2022 00:00	26-03-2022 00:00	57.18	42.56	26.26	Mahakali Colliery Quarters
27-03-2022 00:00	27-03-2022 00:00	88.59	42.06	23.2	Mahakali Colliery Quarters
28-03-2022 00:00	28-03-2022 00:00	86.5	41.97	17.36	Mahakali Colliery Quarters
29-03-2022 00:00	29-03-2022 00:00	99.23	41.82	15.72	Mahakali Colliery Quarters
30-03-2022 00:00	30-03-2022 00:00	72.09	41.57	15.09	Mahakali Colliery Quarters
31-03-2022 00:00	31-03-2022 00:00	82.02	42.03	14.16	Mahakali Colliery Quarters
01-04-2022 00:00	01-04-2022 00:00	80.25	42.41	17.78	Mahakali Colliery Quarters
02-04-2022 00:00	02-04-2022 00:00	60.4	42.97	26	Mahakali Colliery Quarters
03-04-2022 00:00	03-04-2022 00:00	69.6	43.47	24.77	Mahakali Colliery Quarters
04-04-2022 00:00	04-04-2022 00:00	62.4	43.71	23.95	Mahakali Colliery Quarters
05-04-2022 00:00	05-04-2022 00:00	47.55	43.66	23.74	Mahakali Colliery Quarters

**Breathing  
is not a  
choice,  
what you  
breathe is!**

